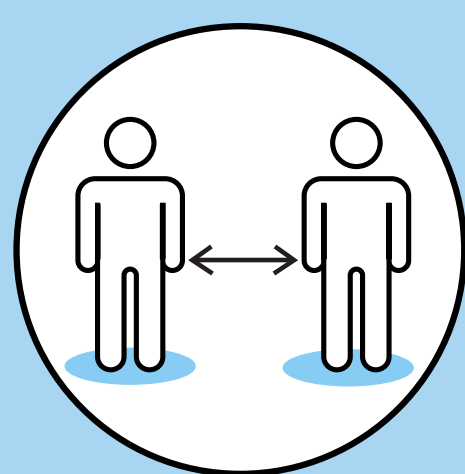


BRIC is dedicated to keeping our community safe.

We are taking the following precautions and ask you do the same.



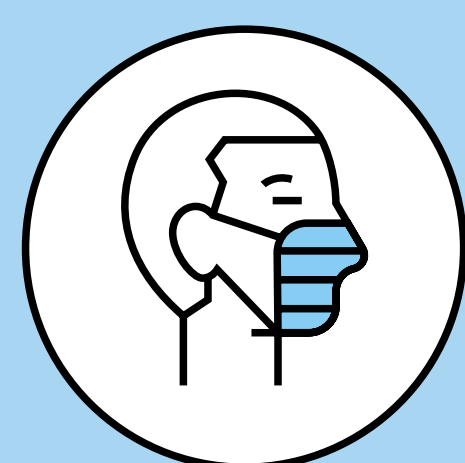
Maintain Distance

Maintain at least 6 feet of physical distance.



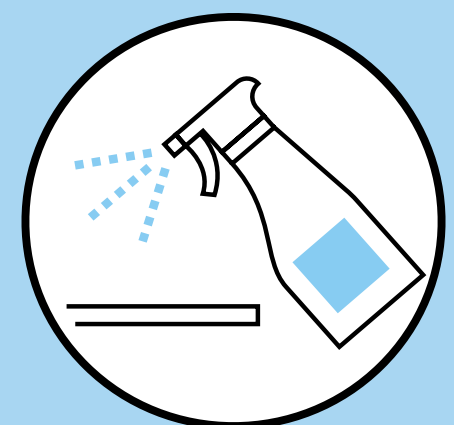
Elevated Cleaning Protocols

BRIC custodial staff are practicing elevated cleaning and sanitizing protocols that meet or exceed public health guidelines.



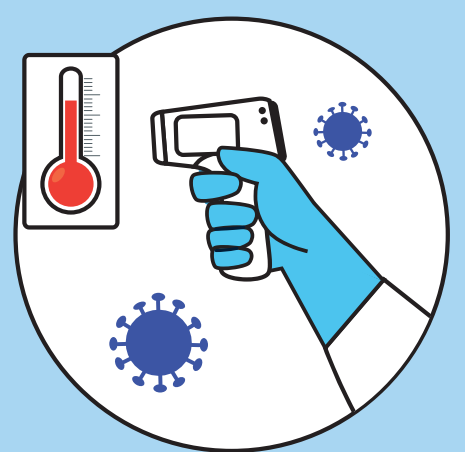
Wear a Mask

Everyone is required to wear an appropriate face covering over nose and mouth. Single valve masks are not permitted.



Disinfect Frequently

Anyone working in BRIC House must disinfect their work surface upon arrival and departure.



Mandatory Temperature Checks

Temperature checks are required upon entry.



Report Symptoms

Symptoms of or exposure to COVID-19 must be reported to your designated Site Safety Manager or Public Safety Officer on duty.



Practice Proper Hand Hygiene

Wash hands often and use hand sanitizer when washing isn't possible.

By entering BRIC House, you agree to follow these guidelines and any subsequent requests from BRIC Staff. Failure to comply with these guidelines will result in your removal from the premises. These guidelines are subject to change based on City & State guidelines.